

# SHARP

Be Original.

## MX-C358F

Digital Full Colour Multifunctional System

## A Safe Pair of Hands for All Your Document Needs



### Space-Saving Design

With its small footprint\* of 417 x 425 mm, this MFD will easily find a niche in your SOHO or larger office. Simply place it on a desk, under a counter, or anywhere that space is limited.

\* "Footprint" refers to the part directly adjacent to the floor or desk space. The numerical value is for the MFD's base unit only.

### Continuous Printing

Don't worry if the colour toner runs low during a print job. You can simply switch to B/W printing and finish the job seamlessly.

### Versatile Paper Handling

With the main paper tray and manual feeder, the MFD can handle a wide variety of paper—including cardstock, envelopes, and small media like A6-size paper.

### Energy Efficient

This MFD comes with a number of energy-management features that reduce power consumption both during active use and during sleep mode.



## Loaded with practical features

Here's a compact, fuss-free document solution that will keep your business moving forward. This cloud-connectable MFD packs in all the key office functions you need. And it's easy to use, thanks to the intuitive interface and full-flat LCD panel. Choose from a range of custom options that let you expand paper capacity, boost security, connect to a wireless LAN, or add a handy stapler.

### Wireless LAN Connections\*

An optional wireless LAN is available that conforms to the IEEE 802.11 a/ac/b/g/n standards. This lets you connect to the MFD via network infrastructure or via Wi-Fi Direct® for mobile devices. Wi-Fi Direct allows peer-to-peer connection with compatible PCs and mobile devices. This comes in handy when you need quick access to an MFD—for example, one at a client's office. Because this wireless LAN is independent from an in-house network, you don't need to worry about security. What's more, it supports dual-band connectivity for both 2.4 GHz and 5 GHz wireless networks. The MFD also has Bluetooth® connectivity.

\* Requires optional 27X6430.

### Cloud Service Connectivity

Directly from its control panel, the MFD can connect to popular cloud services such as OneDrive for Business, Google Drive™, Box, and Dropbox. You can easily print from the cloud or scan and upload to it.

### Device Management

Sharp Remote Device Manager\* (SRDM) gives administrators centralised control of their networked MFDs and printers. This software covers system setup, security settings, troubleshooting, and more.

\* Contact a Sharp customer representative for availability and other details.

### Easy-to-Use Interface

Operating the MX-C358F is easy and intuitive with the free-tilting full-flat 4.3-inch colour LCD touchscreen. In Easy UI mode, the touchscreen displays simple icons for frequently used functions. And with the Preview function\*, you can check the finish of a print and scan job in advance.

\* Requires optional 27X0805 or 57X9528.



### Front USB Port

At the front of the MFD is a USB port, which comes in handy when printing directly from a USB drive—an indispensable function for users who want quick machine access without a PC.

### AirPrint Compatible

The MX-C358F supports the AirPrint printing feature in Apple's iOS and macOS operating systems. AirPrint automatically detects MFDs and printers on the same network. It then lets you print directly from a mobile device without the need for a printer driver.

## Enhanced Security

Protect your intellectual property. A wide range of security features help to keep your information safe, whether it's in a document, on the device, or over your network. The optional Trusted Platform Module provides authentication, system integrity checks, and encryption capabilities.

## Handy Stapler

An easy-to-install optional stapler\* lets you manually staple up to 20 sheets at the MFD without the need for a conventional stapler.

\* Requires a separate power supply.

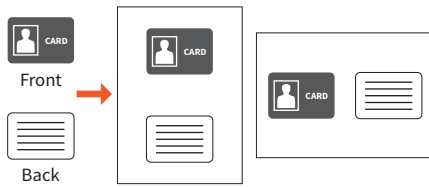


## Ample Paper Capacity

A 250-sheet tray and a 1-sheet manual feeder come standard. Two optional 550-sheet trays and a 650-sheet duo tray are available for a total paper capacity of 2,001 sheets.

## ID Card Copy

The MFD lets you easily copy both sides of a card (ID cards, credit cards, etc.) onto a single page.



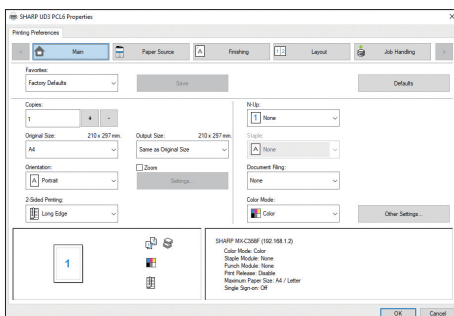
## Office Direct Printing\*

Print common Microsoft Office files without using a PC. With this MFD, you can print a Word, Excel, or PowerPoint file directly from a mobile device, USB drive, or file server.

\* The actual printout may look different from what is displayed on the computer screen.

## Printer Driver with Easy Setup

The printer driver setup window features a simple design that includes larger buttons and drop-down menus, making it easier than ever to use printer functions.



## Quick Scanning

The MFD's standard-equipped DSPF (duplex single pass feeder) scans both pages of two-sided documents in one pass—in batches of up to 100 sheets. With two-sided scanning speeds of up to 68 opm\* in colour and 98 opm\* in B/W, the MFD can complete large jobs with ease and efficiency.

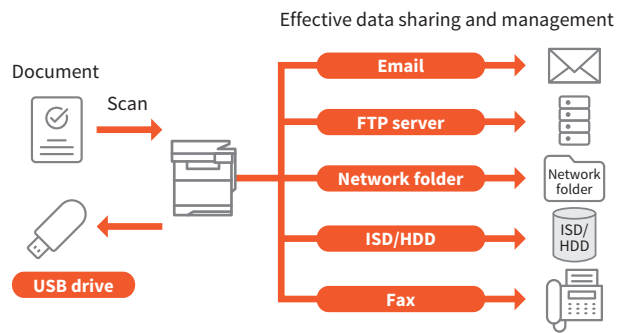
\* Originals per minute; when feeding A4 sheets.



## Multiple Scan Destinations

Scanned documents can be distributed in a number of ways. For example, they can be sent as email attachments or they can be scanned directly to an FTP server for storage. A compact PDF function\* ensures that PDF files are sent and received smoothly.

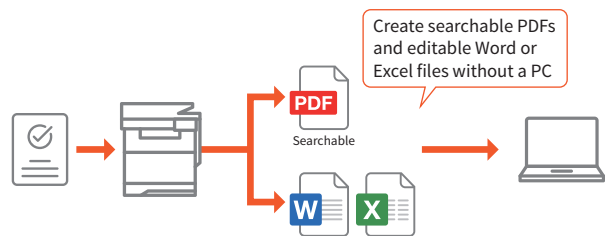
\* Requires optional 27X0805 or 57X9528.



## Convert Documents via OCR\*

OCR capability on this MFD lets you convert a scanned document into a searchable PDF file or into an editable Microsoft Office Word or Excel file. This means you can do speedy text searches, even with large-volume documents, and you can easily copy and paste text data into other applications.

\* Requires optional OCR application with ISD/HDD. Contact a Sharp customer representative for details.



## Convenient Faxing

The MX-C358F supports colour faxes, paperless faxing, and other convenient functions. You can forward faxes to a pre-designated location, such as an FTP server, network folder, or email. This means you can check faxes even when you're out of the office. You can also block junk faxes, allowing you to save on wasted paper and toner. And, for extra security, you can hold incoming fax data and print it out at a time that suits you.

## SPECIFICATIONS

### General

Type	Desktop
Engine speed	A4*1: Max. 33 ppm
Control panel display	4.3-inch colour LCD touchscreen
Paper size	Max. A4, min. A6
Paper capacity (75 g/m <sup>2</sup> )	Standard: 251 sheets (250-sheet tray and 1-sheet manual feeder) Maximum: 2,001 sheets (251 sheets & optional 100 + 550-sheet tray and 550-sheet tray x 2)
Paper weight	Tray 1: 60 g/m <sup>2</sup> to 216 g/m <sup>2</sup> Trays 2-4: 60 g/m <sup>2</sup> to 176 g/m <sup>2</sup> Manual feeder: 60 g/m <sup>2</sup> to 216 g/m <sup>2</sup>
Memory	Standard: 2 GB Option: 128 GB ISD*2 500 GB HDD*2
Dimensions (W x D x H)	475.1 x 479 x 491.4 mm
Weight (approx.)	27.1 kg

### Copier

Original paper size	Max. A4
First copy time*3	Colour: 7.5 sec. B/W: 7.0 sec.
Continuous copy	Max. 9,999 copies
Resolution	Max. 600 x 600 dpi
Zoom range	25% to 400% in 1% increments
Preset copy ratios	6 ratios (2R/4E)

### Scanner

Scan method	Push scan (via control panel) Pull scan (TWAIN-compliant application)
Scan speed**	[Colour] One-sided: Max. 34 originals/min. Two-sided: Max. 68 originals/min. [B/W] One-sided: Max. 49 originals/min. Two-sided: Max. 98 originals/min.
Resolution	Push scan: 75, 150, 200, 300, 400, 600 dpi Pull scan: 75, 150, 200, 300, 400, 600 dpi
File formats	TIFF, PDF, PDF/A-1a, PDF/A-1b, encrypted PDF, XPS, compact PDF*5*6, JPEG*6, searchable PDF*7, DOCX*7, XLSX*7, CSV*7, text (TXT)*7, rich text (RTF)*7
Scan destinations	Scan to email/FTP server/USB drive/network folder (SMB)/ISD/HDD

### Printer

Resolution	1,200 x 1,200 dpi, 2,400 (equivalent) x 600 dpi
Interface	USB 2.0 (host, high-speed), 10Base-T/100Base-TX/1000Base-T, wireless LAN (IEEE 802.11 a/ac/b/g/n)*8
Supported OS	Windows Server 2012 R2, Windows Server 2016, Windows Server 2019, Windows Server 2022, Windows 10, Windows 11, Mac OS 10.15, 11, 12, 13
Network protocols	TCP/IP
Printing protocols	LPD, Raw TCP (port 9100), enhanced IP (port 9400), FTP, TFTP, IPP
PDL	PCL 5c/PCL 6 emulation, PostScript 3 emulation
Available fonts	94 fonts for PCL, 163 fonts for PostScript 3 emulation

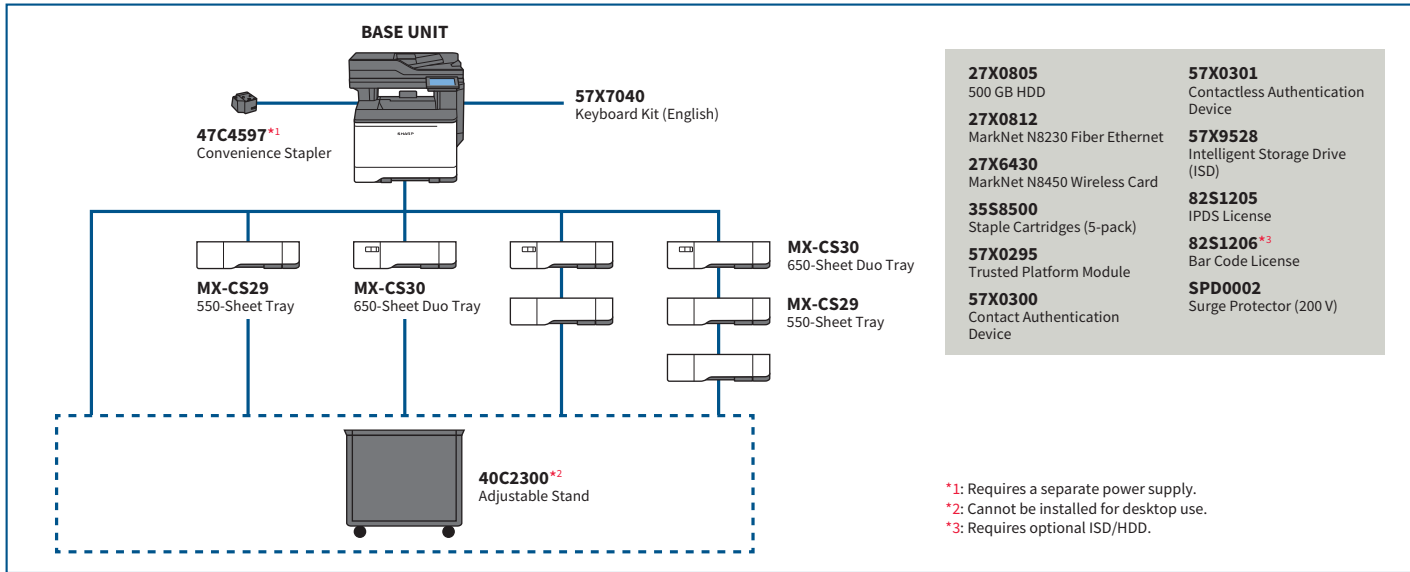
### Facsimile

Compression method	MH/MR/MMR/JBIG/JBIG2/JPEG
Communication protocol	Super G3/G3
Transmission time	Less than 3 seconds*9
Modem speed	33,600 bps to 2,400 bps with automatic fallback
Transmission resolution	B/W: From Standard to Ultra Fine Colour: From Fine to Super Fine
Recording size	A4 to A6
Memory	18 MB (built-in)*10

- \*1: Short-edge feeding.
- \*2: ISD/HDD capacity depends on procurement and sourcing status.
- \*3: Short-edge feeding of A4 sheets from 1st paper tray, using document feeder, MFD in fully ready condition. May vary depending on operating conditions and environment.
- \*4: Scan speed will vary depending on the type of document, scan settings, operating conditions, and environment.
- \*5: Requires optional ISD/HDD.
- \*6: Colour/greyscale only.
- \*7: Requires optional OCR application with ISD/HDD. Contact a Sharp customer representative for details.
- \*8: Optional.
- \*9: Based on ITU-T test chart #1 at 33,600 bps.
- \*10: Faxes are stored on an optional ISD/HDD (if installed). Fax storage is 1 GB less than total hard drive capacity.

• Design and specifications are subject to change without prior notice.  
 • Wi-Fi Direct is a registered trademark of Wi-Fi Alliance®. The Bluetooth word mark is a registered trademark owned by Bluetooth SIG, Inc. Microsoft, Excel, OneDrive, PowerPoint, Windows, and Windows Server are trademarks of the Microsoft group of companies. Google Drive is a trademark of Google LLC. Box is a trademark, service mark, or registered trademark of Box, Inc. Dropbox is a trademark or registered trademark of Dropbox, Inc. AirPrint, Apple, macOS, and Mac are trademarks of Apple Inc., registered in the US and other countries. PCL is a registered trademark of Hewlett-Packard Company. PostScript is either a registered trademark or trademark of Adobe in the US and/or other countries. All other brand names and product names may be trademarks or registered trademarks of their respective owners.

## SYSTEM CONFIGURATION



\*1: Requires a separate power supply.  
 \*2: Cannot be installed for desktop use.  
 \*3: Requires optional ISD/HDD.

Distributed by:



**SHARP CORPORATION OF AUSTRALIA PTY LTD**  
 ABN 40 003 039 405  
 P.O. Box 84, Macquarie Park, NSW 2113  
 Tel: 1300 135 022  
 www.sharp.net.au